

ORIGINAL SPARE PARTS
ORIGINAL SPARE PARTS
ORIGINAL SPARE PARTS
ORIGINAL SPARE PARTS
ORIGINAL SPARE PARTS



651

**CATALOGO RICAMBI
SPARE PARTS CATALOG
CATALOGUE RECHANGES
ERSATZTEILKATALOG**

TXR 312 e TXR 240



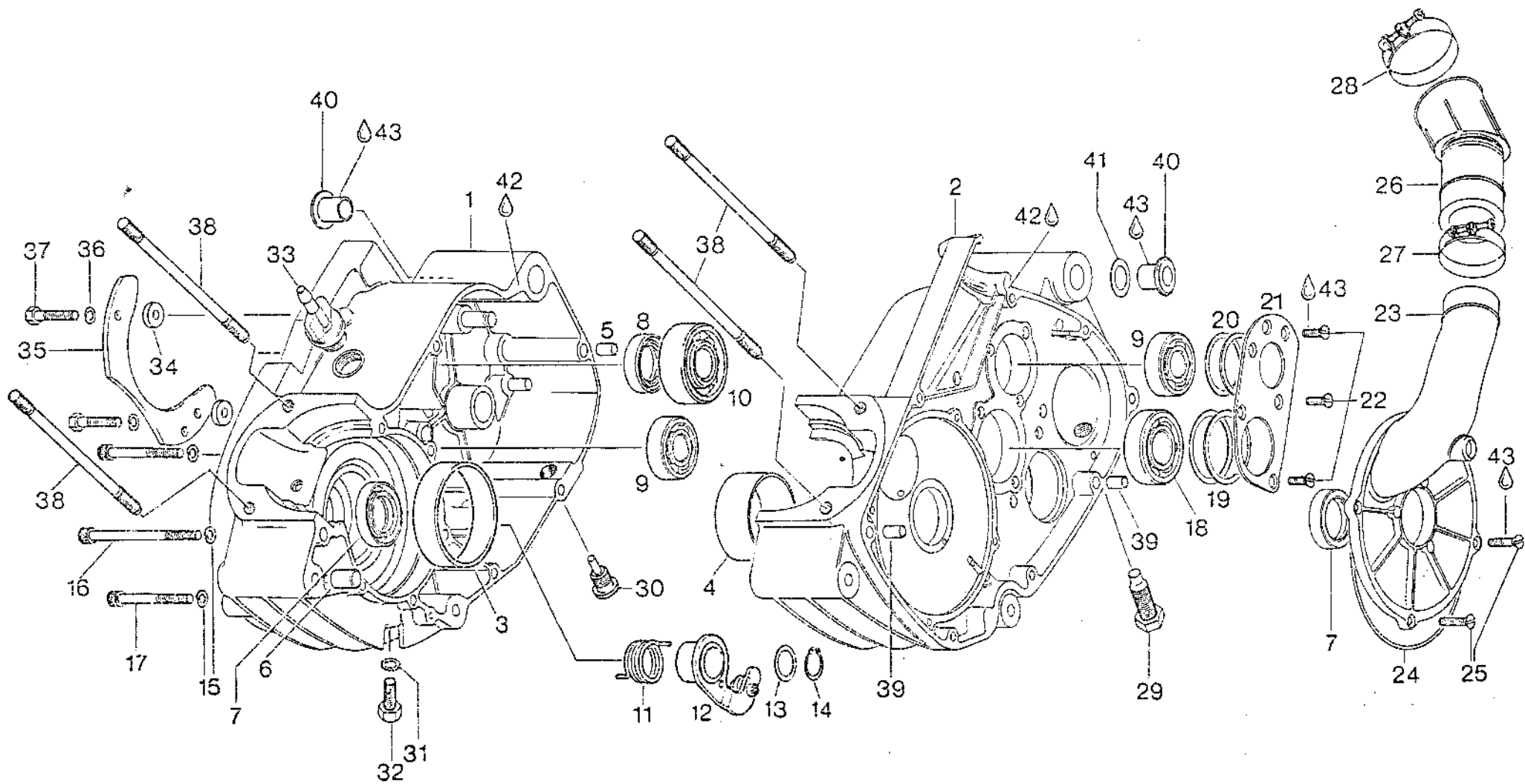
Edizione
Edition
Ausgabe

IV-88

Motore Tipo
Engine Type
Motor Type

**240-280 TL
SCS**





GEHAEUSE, DREHSCHIEBERDECKEL
 CRANKCASE, DISK VALVE COVER
 CARTER MOTORE, COPERCHIO VALVOLA

BILD-NR. ILL. NO. FIG.	TEILE-NR. PART NO. CODICE	B E Z E I C H N U N G D E S C R I P T I O N D E S C R I Z I O N E	STUECK QTY. QTA.
1 - 6	293 736	GEHAEUSE KPL. / CRANKCASE ASSY., CARTER MOTORE CPL.....	1
3	960 767	GEHAEUUSERING / CRANKCASE RING ANELLO TEFLON..... MAGNETSEITIG MAGNETO SIDE LATO MAGNETO	1
4	260 400	GEHAEUUSERING KS / CRANKCASE RING ANELLO TEFLON..... KUPPLUNGSSEITIG CLUTCH SIDE LATO FRIZIONE	1
5	229 140	PASSHUELSE 9,8X10 / DWEL 9,8X10 SPINA 9,8X10.....	1
6	229 160	PASSHUELSE 13,8X15 / DWEL 13,8X15 SPINA 13,8X15.....	1
7	230 425	WD-RING AS 28X38X7 / OIL SEAL 28X38X7 PARAGLIO 28X38X7.....	2
8	930 675	WD-RING AS 25X38X7 / OIL SEAL 25X38X7 PARAGLIO 25X38X7..... FUER HAUPTWELLE FOR MAIN SHAFT PER ALBERO SECONDARIO	1
9	932 032	RK-LAGER 6203 TVH C3 BALL BEARING 6203TVH C3, 17-40-12 CUSCINETTO 6203 TVH C3, 17-40-12..... 17-40-12	2
10	932 420	RK-LAGER 6205 C3 BALL BEARING 6205 C3, 25-52-15 CUSCINETTO 6205 C3, 25-52-15..... FUER HAUPTWELLE, ABTRIEBSEITIG, 25-52-15 FOR MAIN SHAFT, P.T.O. SIDE PER ALBERO SECONDARIO, LATO VOLANO	1
11	239 755	INDEXFEDER / INDEX SPRING / MOLLA.....	1
12	248 977	ROLLENINDEX KPL. / INDEX LEVER ASSY., LEVA INDEX CPL.,.....	1

BILD-NR. ILL. NO. FIG.	TEILE-NR. PART NO. CODICE	B E Z E I C H N U N G D E S C R I P T I O N D E S C R I Z I O N E	STUECK QTY. QTA.
13	227 800	ANLAUFSSCHEIBE 16,2/21/0,4 THRUST WASHER 16,2/21/0,4 RASAMENTO 16,2/21/0,4.....	1
14	945 840	SICHERUNGSRING 15X1 DIN 471 LOCKING RING 15X1 / SEGER 15X1.....	1
15	945 751	FEDERRING A6 DIN 128 / LOCK WASHER A6 RONDELLA SPACCATA A6.....	10
16	241 871	ZYL.SCHRAUBE M6X70 DIN 912 ALLEN SCREW M6X70 / BRUGOLA M6X70.....	5
17	241 320	ZYL.SCHRAUBE M6X45 DIN 912 ALLEN SCREW M6X45 / BRUGOLA M6X45.....	5
18	N 932 430	RK-LAGER 6204 TNH C3 BALL BEARING 6204 TNH, 20-47-14 CUSCINETTO 6204 TNH, 20-47-14.....	1
		FUER VORGELEGEWELLE, KUPPLUNGSSEITIG, 20-47-14 FOR CLUTCH SHAFT, CLUTCH SIDE PER ALBERO PRIMARIO, LATO FRIZIONE	
19	227 610	AUSGLEICHSCHEIBE 40/46,5/0,5 SHIM 40/46,5/0,5 SPESSORE 40/46,5/0,5.....	N BED AS REQ A RICH
		FUER VORGELEGEWELLE FOR CLUTCH SHAFT PER ALBERO PRIMARIO	
19	227 611	AUSGLEICHSCHEIBE 40/46,5/0,3 SHIM 40/46,5/0,3 SPESSORE 40/46,5/0,3.....	N BED AS REQ A RICH
		FUER VORGELEGEWELLE FOR CLUTCH SHAFT PER ALBERO PRIMARIO	
19	227 612	AUSGLEICHSCHEIBE 40/46,5/0,1 SHIM 40/46,5/0,1 SPESSORE 40/46,5/0,1.....	N BED AS REQ A RICH
		FUER VORGELEGEWELLE FOR CLUTCH SHAFT PER ALBERO PRIMARIO	
20	227 520	AUSGLEICHSCHEIBE 34/39,5/0,5 SHIM 34/39,5/0,5 SPESSORE 34/39,5/0,5.....	N BED AS REQ A RICH
		FUER HAUPTWELLE FOR MAIN SHAFT PER ALBERO SECONDARIO	



CENTRO RICAMBI^{SRL}

via CIMABUE, 24/A - 50121 FIRENZE (ITALY)

TEL. (+39) 055-66 64 23 - FAX (+39) 055-67 00 84

e-mail: cr1firenze@tiscali.it

BILD-NR. ILL. NO. FIG.	TEILE-NR. PART NO. CODICE	B E Z E I C H N U N G D E S C R I P T I O N D E S C R I Z I O N E	STUECK QTY. QTA.
20	227 521	AUSGLEICHSCHLEIBE 34/39,5/0,3 SHIM 34/39,5/0,3 SPESSORE 34/39,5/0,3..... FUER HAUPTWELLE FOR MAIN SHAFT PER ALBERO SECONDARIO	N BED AS REQ A RICH
20	227 522	AUSGLEICHSCHLEIBE 34/39,5/0,1 SHIM 34/39,5/0,1 SPESSORE 34/39,5/0,1..... FUER HAUPTWELLE FOR MAIN SHAFT PER ALBERO SECONDARIO	N BED AS REQ A RICH
21	227 110	HALTEBLECH / RETAINING PLATE PIASTRA FISSAGGIO CUSCINETTI.....	1
22	940 315	SENKSCHRAUBE M5X12 DIN 963 COUNTERSUNK SCREW M5X12 / VITE M5X12..... ANZUGSDREHMOMENT 5 NM TIGHTENING TORQUE 5 NM COPPIA DI SERRAGGIO 5 NM	5
23	212 352	DREHSCHIEBERDECKEL / DISK VALVE COVER COPERCHIO VALVOLA ROTANTE.....	1
24	230 310	O-RING 114-2 NBR 70-80 SH / O-RING 114-2 ANELLO OR 114-2.....	1
25	940 510	SENKSCHRAUBE M5X16 DIN 963 COUNTERSUNK SCREW M5X16 / VITE M5X16.....	4
26	267 970	VERGASERWINKELROHR CARBURETOR ANGULAR TUBE MANICOTTO ANGOLARE CARBURATORE..... POSITION 7,25 POSITION 7,25 POSITIDNE 7,25	1
27	251 845	SCHLAUCHSCHELLE 42 / HOSE CLAMP 42 FASCETTA 42.....	1
28	251 820	SCHLAUCHSCHELLE 47 / HOSE CLAMP 47 FASCETTA 47.....	1
29	241 777	AUSRUECKSCHRAUBE M12 / HEX. SCREW M12 VITE M12..... ANZUGSDREHMOMENT 75 NM TIGHTENING TORQUE 75 NM COPPIA DI SERRAGGIO 75 NM	1
30	241 781	MAGNETSCHRAUBE M12X1,5 MAGNETIC DRAIN PLUG M12X1,5 VITE MAGNETICA M12X1,5.....	1

BILD-NR. ILL. NO. FIG.	TEILE-NR. PART NO. CODICE	B E Z E I C H N U N G D E S C R I P T I O N D E S C R I Z I O N E	STUECK QTY. QTA.
31	950 141	DICHTRING A8X13 DIN 7603 GASKET RING A8X13 RONDELLA GUARNIZIONE A8X13.....	1
32	940 581	SK-SCHRAUBE M8X16 DIN 933 HEX. SCREW M8X16 / VITE ESAGONALE M8X16..	1
33	241 925	ENTLUEFTERSCHRAUBE M18X1,5 AIR VENT SCREW M13X1,5 TAPPO SFIATO M18X1,5.....	1
34	247 240	DISTANZRING 6,2/16/2,5 / SPACER DISTANZIALE..... FUER KETTENFUEHRUNG FOR CHAIN GUARD PER GUIDA DI CATENA	2
35	297 528	KETTENFUEHRUNG / CHAIN GUARD GUIDA CATENA.....	1
36	945 751	FEDERRING A6 DIN 128 / LOCK WASHER A6 RONDELLA SPACCATA A6.....	2
37	241 186	SK-SCHRAUBE M6X16 DIN 933 HEX. SCREW M6X16 / VITE ESAGONALE M6X16...	2
38	241 120	STIFTSCHRAUBE M8X163,5 / STUD M8X163,5 PRIGIONIERO M8X163,5..... ANZUGSDREHMOMENT 8 NM TIGHTENING TORQUE 8 NM COPPIA DI SERRAGGIO 8 NM	4
39	949 900	PASSHUELSE 8,4X10 / DOWEL 8,4X10 SPINA 8,4X10.....	2
40	247 320	BUNDBUECHSE / SLEEVE / BUSSOLA.....	2
41	246 150	AUSGLEICHSCHEIBE 16,3/25,8/0,3 SHIM 16,3/25,8/0,3 SPESSORE 16,3/25,8/0,3.....	N BED AS REQ A RICH
41	246 151	AUSGLEICHSCHEIBE 16,3/25,8/0,5 SHIM 16,3/25,8/0,5 SPESSORE 16,3/25,8/0,5.....	N BED AS REQ A RICH
42	899 784	LOCTITE 574 LOCTITE 574 ORANGE 50 CC., LOCTITE 574 ARANCIO 50 CC. 5..... FLAECHENDICHTUNGSMITTEL, 50 CCM SEALING COMPOUND PASTA GUARNIZIONE	N BED AS REQ A RICH



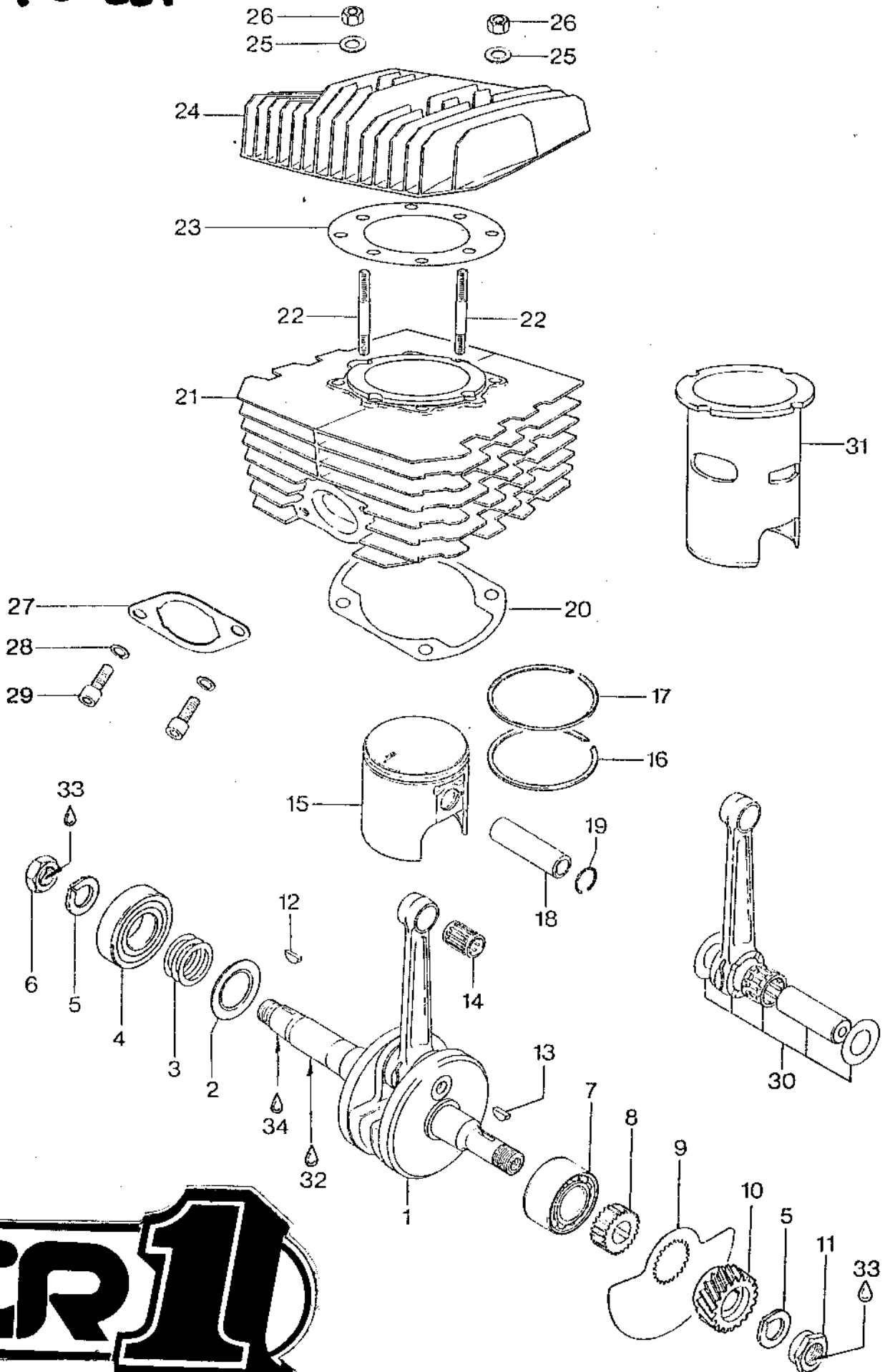
CENTRO RICAMBI^{SRL}

via CIMABUE, 24/A - 50121 FIRENZE (ITALY)

TEL. (+39) 055-66 64 23 - FAX (+39) 055-67 00 84

e-mail: cr1firenze@tiscali.it

240cc.



KURBELWELLE, KOLBEN, ZYLINDER, ZYLINDERKOPF
 FUER MOTOR TYPE 240 TL
 CRANKSHAFT, PISTON, CYLINDER, CYLINDER HEAD
 FOR ENGINE TYPE 240 TL
 ALBERO MOTORE, PISTONE, CILINDRO, TESTA CILINDRO
 PER MOTORI TIPO 240 TL

240 cc.

BILD-NR. ILL. NO. FIG.	TEILE-NR. PART NO. CODICE	B E Z E I C H N U N G D E S C R I P T I O N D E S C R I Z I O N E	STUECK QTY. QTA.
1	291 990	KURBELWELLE KPL. / CRANKSHAFT ASSY., ALBERO MOTORE CPL.,..... HUB 61 MM STROKE 61 MM CORSA 61 MM	1
2	227 755	RADIUSSCHEIBE 30,9/50/0,75 DISTANCE RING 30,9/50/0,75 Distanziale 30,9/50/0,75..... MAGNETSEITIG MAGNETO SIDE LATO MAGNETE	1
3	944 582	AUSGLEICHSCHIEBE 30,4/40,5/0,3 SHIM 30,4/40,5/0,3 SPESSORE 30,4/40,5/0,3..... MAGNETSEITIG MAGNETO SIDE LATO MAGNETE	N BED AS REQ A RICH
3	944 583	AUSGLEICHSCHIEBE 30,4/40,5/0,1 SHIM 30,4/40,5/0,1 SPESSORE 30,4/40,5/0,1..... MAGNETSEITIG MAGNETO SIDE LATO MAGNETE	N BED AS REQ A RICH
3	944 586	AUSGLEICHSCHIEBE 30,4/40,5/0,2 SHIM 30,4/40,5/0,2 SPESSORE 30,4/40,5/0,2..... MAGNETSEITIG MAGNETO SIDE LATO MAGNETE	N BED AS REQ A RICH
4	N 932 583	RK-LAGER 6206 TNH C4 BALL BEARING 6206TNH C4,30-62-16 CUSCINETTO 6206 TNH C4, 30-62-16..... MAGNETSEITIG, 30-62-16 MAGNETO SIDE LATO MAGNETE	1
5	945 757	SPERRKANTRING 18 DIN 128 A LOCK WASHER 18 / RONDELLA SPACCATA 18.....	2

BILD-NR. ILL. NO. FIG.	TEILE-NR. PART NO. CODICE	B E Z E I C H N U N G D E S C R I P T I O N D E S C R I Z I O N E	STUECK QTY. QTA.
6	942 220	SK-MUTTER M18X1,5 DIN 936 HEX. NUT M18X1,5 / DADO M18X1,5..... MAGNETSEITIG, ANZUGSDREHMOMENT 100 NM MAGNETO SIDE, TIGHTENING TORQUE 100 NM LATO MAGNETE, COPPIA DI SERRAGGIO 100 NM	1
7	232 750	SCHRAEGKUGELLAGER 3205 C3 BALL BEARING 3205 C3/ 25-52-20,6 CUSCINETTO 3205 C3 / 25-52-20,6..... KUPPLUNGSSEITIG, 25-52-20,6 CLUTCH SIDE LATO FRIZIONE	1
8	247 290	DREHSCHIEBERHUELSE / DISK VALVE SPACER MOZZO VALVOLA.....	1
9	224 102	DREHSCHIEBER / ROTARY VALVE 128 DEGR., VALVOLA ROTANTE 128.....	1
10	292 182	PRIMAERTRIEB KPL. / PRIMARY DRIVE ASSY., TRASMISSIONE PRIMARIO CPL.,..... NUR ANTRIEDSRAD UND KUPPLUNGSKORB GEMEINSAM AUS- TAUSCHEN REPLACE ONLY DRIVE GEAR WITH CLUTCH DRUM ASSY. CAMBIARE SOLO L'INGRANAGGIO E LA CAMPANA FRIZIONE INSIEME	1
11	242 610	BUNDMUTTER M18X1,5 / NUT M18X1,5 DADO M18 X 1,5..... ANZUGSDREHMOMENT 30 NM TIGHTENING TORQUE 30 NM COPPIA DI SERRAGGIO 30 NM	1
12	246 011	SCHEIBENFEDER 3X5 DIN 6888 WOODRUFF KEY 3X5 / LINGUETTA 3X5..... MAGNETSEITIG MAGNETO SIDE LATO MAGNETE	1
13	246 570	SCHEIBENFEDER 4X5 DIN 6883 WOODRUFF KEY 4X5 / LINGUETTA 4X5..... KUPPLUNGSSEITIG CLUTCH SIDE LATO FRIZIONE	1
14	932 904	KOLBENBOLZENKAEFIG K 18X22X22 NEEDLE CAGE 18X22X22 GABBIA A RULLI 18X22X22.....	1



CENTRO RICAMBI SRL
 via CIMABUE, 24/A - 50121 FIRENZE (ITALY)
 TEL. (+39) 055-66 64 23 - FAX (+39) 055-67 00 84
 e-mail: cr1firenze@tiscali.it

BILD-NR. ILL. NO. FIG.	TEILE-NR. PART NO. CODICE	B E Z E I C H N U N G D E S C R I P T I O N D E S C R I Z I O N E	STUECK QTY. QTA.
15 - 17	292 555	KOLBEN KPL. 70,5 MM PISTON ASSY. W.RINGS 70,5 MM PISTONE 70,5..... 1 MIT RINGEN, STANDARD ROT 70,46 MM - STANDARD GRUEN 70,47 MM WITH RINGS, STANDARD RED 70,46 MM - STANDARD GREEN 70,47 MM CON SEGMENTI, STANDARD ROSSO 70,46 MM - STANDARD VERDE 70,47 MM	
15 - 17	292 556	KOLBEN KPL. 70,75 MM PISTON ASSY. W.RINGS 70,75 MM PISTONE 70,75..... 1 MIT RINGEN, 1. SCHLIFF ROT 70,71 MM - 1. SCHLIFF GRUEN 70,72 MM WITH RINGS, 1ST OVERSIZE RED 70,71 MM - 1ST OVERSIZE GREEN 70,72 MM CON SEGMENTI, 1A MAGGIORAZIONE ROSSO 70,71 MM - 1A MAGGIORAZIONE VERDE 70,72 MM	
16	215 360	R-RING IS2-70,5/64,6X1,5 RECTANGULAR RING 70,5 MM SEGMENTO R 70,5 MM..... 1 STANDARD STANDARD STANDARD	
16	215 366	R-RING IS2-70,75/64,85X1,5 RECTANGULAR RING 70,75 MM SEGMENTO R 70,75 MM..... 1 1. SCHLIFF 1ST OVERSIZE 1A MAGGIORAZIONE	
17	215 340	ETL-RING IS2-70,5/64,3X2 SEMI-TRAPEZ RING 70,5 MM SEGMENTO SEMI-TRAPEZ 70,5 MM..... 1 STANDARD STANDARD STANDARD	
17	215 341	ETL-RING IS2-70,75/64,55X2 SEMI-TRAPEZ RING 70,75 MM SEGMENTO SEMI-TRAPEZ 70,75 MM..... 1 1. SCHLIFF 1ST OVERSIZE 1A MAGGIORAZIONE	
18	916 185	KOLBENBOLZEN 18X11X58,7 PISTON PIN 18X11X58,7 SPINOTTO 18X11X58,7..... 1	



CENTRO RICAMBI SRL

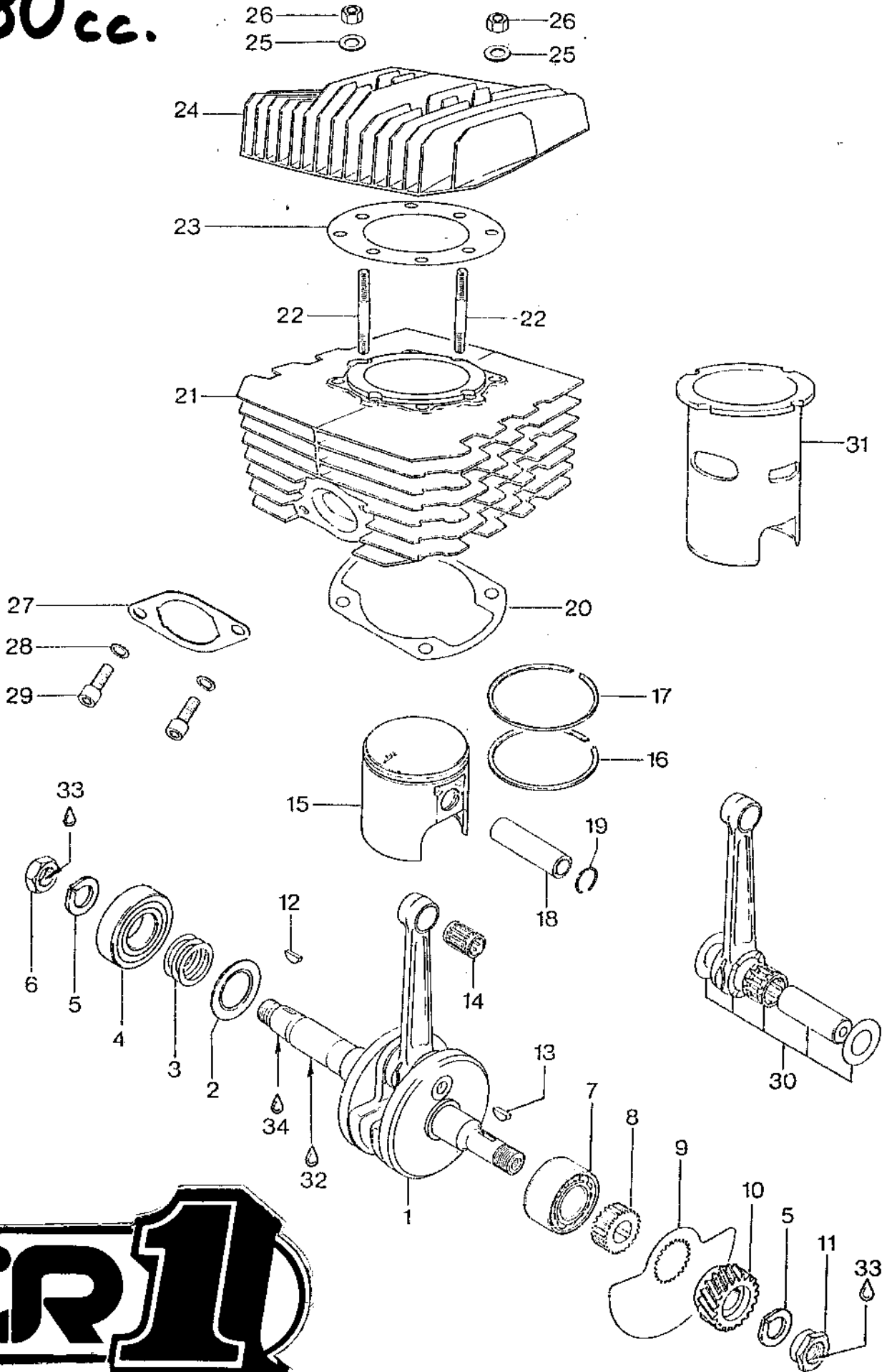
via CIMABUE, 24/A - 50121 FIRENZE (ITALY)

TEL. (+39) 055-66 64 23 - FAX (+39) 055-67 00 84

e-mail: cr1firenze@tiscali.it

BILD-NR. ILL. NC. FIG.	TEILE-NR. PART NO. CODICE	B E Z E I C H N U N G D E S C R I P T I O N D E S C R I Z I O N E	STUECK QTY. QTA.
19	945 735	MULLHAKENRING 18 / CIRCLIP 18 SEGER SPINOTTO 13..... NUR 1 X VERWENDBAR USE ONLY ONCE UTILIZZARE SOLO UNA VOLTA	2
20	230 552	DICHTUNG / GASKET / GUARNIZIONE.....	1
21	N 213 479	ZYLINDER MIT BUECHSE CYLINDER WITH SLEEVE CILINDRO CON CAMICIA..... STANDARD ROT 70,50 - 70,51 MM, STANDARD GRUEN 70,51 - 70,52 MM STANDARD RED 70,50 - 70,51 MM, STANDARD GREEN 70,51 - 70,52 MM STANDARD ROSSO 70,50 - 70,51 MM, STANDARD VERDE 70,51 - 70,52 MM	1
22	241 110	STIFTSCHRAUBE M8X43,5/15 STUD M8X43,5/15 / PRIGIONIERO M8X43,5/15. ANZUGSDREHMOMENT 8 NM TIGHTENING TORQUE 8 NM COPPIA DI SERRAGGIO 8 NM	4
23	230 775	VERDICHTUNGSBEILAGE SHIM, CYLINDER HEAD GUARNIZIONE TESTA.....	N BED AS REQ A RICH
24	223 317	ZYLINDERKOPF / CYLINDER HEAD TESTA CILINDRO.....	1
25	250 311	SCHEIBE 8,4 DIN 125 / WASHER 8,4 RONDELLA 8,4.....	8
26	242 206	SK-MUTTER M8 DIN 934 / HEX. NUT M8 DADO M8..... ANZUGSDREHMOMENT 22 NM TIGHTENING TORQUE 22 NM COPPIA DI SERRAGGIO 22 NM	8
27	830 270	DICHTUNG / GASKET / GUARNIZIONE.....	1
28	945 752	FEDERRING A8 DIN 128 / LOCK WASHER A8 RONDELLA SPACCATA A8.....	2
29	240 081	ZYL.SCHRAUBE M8X25 DIN 912 ALLEN SCREW M8X25 / BRUGOLA M8X25.....	2
30	292 024	KURBELWELLENSATZ KPL. CRANKSHAFT REPAIR KIT GRUPPO BIELLA CPL.....	1
31	213 483	ZYLINDERBUECHSE / CYLINDER SLEEVE CAMICIA CILINDRO.....	1

280cc.



KURBELWELLE, KOLBEN, ZYLINDER, ZYLINDERKOPF
 FUER MOTOR TYPE 280 TL
 CRANKSHAFT, PISTON, CYLINDER, CYLINDER HEAD
 FOR ENGINE TYPE 280 TL
 ALBERO MOTORE, PISTONE, CILINDRO, TESTA CILINDRO
 PER MOTORE TIPO 280 TL

280 cc.

BILD-NR. ILL. NO. FIG.	TEILE-NR. PART NO. CODICE	B E Z E I C H N U N G D E S C R I P T I O N D E S C R I Z I O N E	STUECK QTY. QTA.
1	291 990	KURBELWELLE KPL. / CRANKSHAFT ASSY., ALBERO MOTORE CPL.,..... HUB 61 MM STROKE 61 MM CORSA 61 MM	1
2	227 755	RADIUSSCHEIBE 30,9/50/0,75 DISTANCE RING 30,9/50/0,75 Distanziale 30,9/50/0,75..... MAGNETSEITIG MAGNETO SIDE LATO MAGNETE	1
3	944 582	AUSGLEICHSCHIEBE 30,4/40,5/0,3 SHIM 30,4/40,5/0,3 SPESSORE 30,4/40,5/0,3..... MAGNETSEITIG MAGNETO SIDE LATO MAGNETE	N BED AS REQ A RICH
3	944 583	AUSGLEICHSCHIEBE 30,4/40,5/0,1 SHIM 30,4/40,5/0,1 SPESSORE 30,4/40,5/0,1..... MAGNETSEITIG MAGNETO SIDE LATO MAGNETE	N BED AS REQ A RICH
3	944 586	AUSGLEICHSCHIEBE 30,4/40,5/0,2 SHIM 30,4/40,5/0,2 SPESSORE 30,4/40,5/0,2..... MAGNETSEITIG MAGNETO SIDE LATO MAGNETE	N BED AS REQ A RICH
4	N 932 583	RK-LAGER 6206 TNH C4 BALL BEARING 6206TNH C4,30-62-16 CUSCINETTO 6206 TNH C4, 30-62-16..... MAGNETSEITIG, 30-62-16 MAGNETO SIDE LATO MAGNETE	1
5	945 757	SPERRKANTRING 18 DIN 128 A LOCK WASHER 18 / RONDELLA SPACCATA 18.....	2

BILD-NR. ILL. NO. FIG.	TEILE-NR. PART NO. CODICE	B E Z E I C H N U N G D E S C R I P T I O N D E S C R I Z I O N E	STUECK QTY. QTA.
6	942 220	SK-MUTTER M18X1,5 DIN 936 HEX. NUT M18X1,5 / DADO M18X1,5..... MAGNETSEITIG, ANZUGSDREHMOMENT 100 NM MAGNETO SIDE, TIGHTENING TORQUE 100 NM LATO MAGNETE, COPPIA DI SERRAGGIO 100 NM	1
7	232 750	SCHRAEGKUGELLAGER 3205 C3 BALL BEARING 3205 C3/ 25-52-20,6 CUSCINETTO 3205 C3 / 25-52-20,6..... KUPPLUNGSSEITIG, 25-52-20,6 CLUTCH SIDE LATO FRIZIONE	1
8	247 290	DREHSCHIEBERHUELSE / DISK VALVE SPACER MOZZO VALVOLA.....	1
9	224 102	DREHSCHIEBER / ROTARY VALVE 128 DEGR., VALVOLA ROTANTE 128.....	1
10	292 182	PRIMAERTRIEB KPL. / PRIMARY DRIVE ASSY., TRASMISSIONE PRIMARIO CPL.,..... NUR ANTRIEBSRAD UND KUPPLUNGSKORB GEMEINSAM AUS- TAUSCHEN REPLACE ONLY DRIVE GEAR WITH CLUTCH DRUM ASSY. CAMBIARE SOLO L'INGRANAGGIO E LA CAMPANA FRIZIONE INSIEME	1
11	242 610	BUNDMUTTER M18X1,5 / NUT M18X1,5 DADO M18 X 1,5..... ANZUGSDREHMOMENT 80 NM TIGHTENING TORQUE 80 NM COPPIA DI SERRAGGIO 80 NM	1
12	246 011	SCHEIBENFEDER 3X5 DIN 6888 WOODRUFF KEY 3X5 / LINGUETTA 3X5..... MAGNETSEITIG MAGNETO SIDE LATO MAGNETE	1
13	246 570	SCHEIBENFEDER 4X5 DIN 6888 WOODRUFF KEY 4X5 / LINGUETTA 4X5..... KUPPLUNGSSEITIG CLUTCH SIDE LATO FRIZIONE	1
14	932 904	KOLBENBOLZENKAEFIG K 18X22X22 NEEDLE CAGE 18X22X22 GABBIA A RULLI 18X22X22.....	1



CENTRO RICAMBI ^{SRL}

via CIMABUE, 24/A - 50121 FIRENZE (ITALY)

TEL. (+39) 055-66 64 23 - FAX (+39) 055-67 00 84

e-mail: cr1firenze@tiscali.it

BILD-NR. ILL. NO. FIG.	TEILE-NR. PART NO. CODICE	B E Z E I C H N U N G D E S C R I P T I O N D E S C R I Z I O N E	STUECK QTY. QTA.
15 - 17	291 985	KOLBEN KPL. 76 MM / PISTON ASSY., 76 MM PISTONE CPL., 76 MM..... 1 MIT RINGEN, STANDARD ROT 75,96 MM, STANDARD GRUEN 75,97 MM BIS MOTOR-NR. 154.962 WITH RINGS, STANDARD RED 75,96 MM, STANDARD GREEN 75,97 MM UP TO ENGINE SERIAL NO. 154.962 CON SEGMENTI, STANDARD ROSSO 75,96 MM, STANDARD VERDE 75,97 MM FINO A N. MOTORE 154.962	
15 - 17	N 293 900	KOLBEN KPL. 75,98/75,99 MM PISTON ASSY. 75,98/75,99 MM PISTONE CPL. 75,98/75,99 MM..... 1 AB MOTOR-NR. 154.963 MIT RINGEN, STANDARD ROT 75,98 MM, STANDARD GRUEN 75,99 MM VALID FROM ENGINE SERIAL NO. 154.963 WITH RINGS, STANDARD RED 75,98 MM, STANDARD GREEN 75,99 MM A PARTIRE N. MOTORE 154.963 CON SEGMENTI, STANDARD ROSSO 75,98 MM, STANDARD VERDE 75,99 MM	
15 - 17	291 981	KOLBEN KPL. 76,25 MM PISTON ASSY., 76,25 MM PISTONE CPL., 76,25 MM..... 1 MIT RINGEN, 1. SCHLIFF ROT 76,21 MM - 1. SCHLIFF GRUEN 76,22 MM WITH RINGS, 1ST OVERSIZE RED 76,21 MM - 1ST OVERSIZE GREEN 76,22 MM CON SEGMENTI, 1A MAGGIORAZIONE ROSSO 76,21-1A MAGGIORAZIONE VERDE 76,22 MM	
15 - 17	(291 982) 886 272	KOLBEN KPL. 76,5 MM PISTON ASSY., 76,5 MM PISTONE CPL., 76,5 MM..... 1 MIT RINGEN, 2. SCHLIFF ROT 76,46 MM - 2. SCHLIFF GRUEN 76,47 MM WITH RINGS, 2ND OVERSIZE RED 76,46 MM - 2ND OVERSIZE GREEN 76,47 MM CON SEGMENTI, 2A MAGGIORAZIONE ROSSO 76,46MM - 2A MAGGIORAZIONE VERDE 76,47 MM	
16	915 215	R-RING IS 2-76/69,7X2 RECTANGULAR RING 76 MM / SEGMENTO R 76 MM 1 STANDARD STANDARD STANDARD	



CENTRO RICAMBI^{SRL}

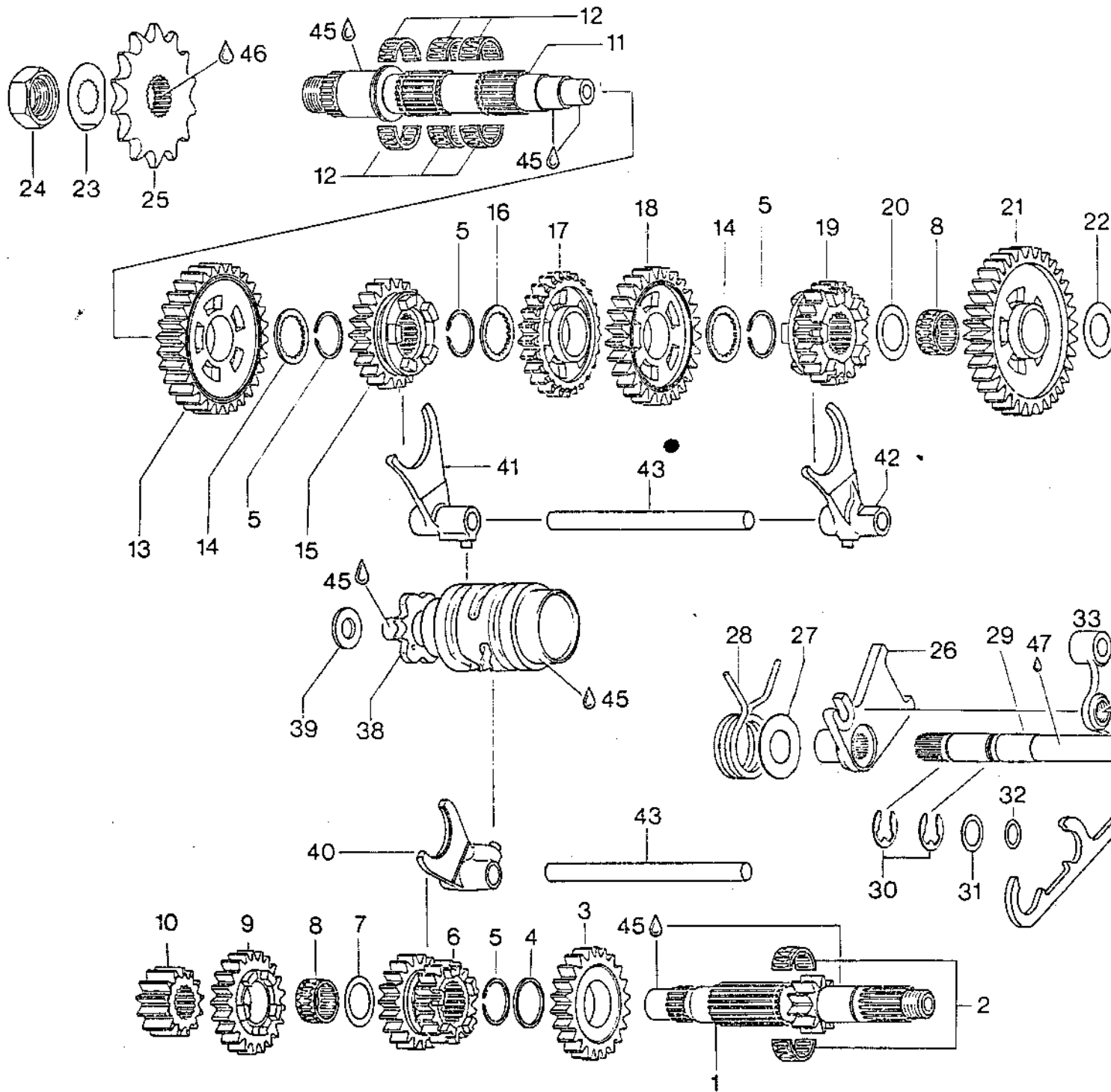
via CIMABUE, 24/A - 50121 FIRENZE (ITALY)

TEL. (+39) 055-66 64 23 - FAX (+39) 055-67 00 84

e-mail: cr1firenze@tiscali.it

BILD-NR. ILL. NO. FIG.	TEILE-NR. PART NO. CODICE	B E Z E I C H N U N G D E S C R I P T I O N D E S C R I Z I O N E	STUECK QTY. QTA.
16	215 201	R-RING IS2-76,25/69,95X2 RECTANGULAR RING 76,25 MM SEGMENTO R 76,25 MM..... 1. SCHLIFF 1ST OVERSIZE 1A MAGGIORAZIONE	1
16	215 202	R-RING IS2-76,5/70,2X2 RECTANGULAR RING 76,5 MM SEGMENTO R 76,5 MM..... 2. SCHLIFF 2ND OVERSIZE 2A MAGGIORAZIONE	1
17	915 820	ETL-RING IS 2-76/69,4X2 SEMI TRAPEZ RING 76,0 MM SEGMENTO SEMI-TRAPEZ 76,0 MM..... STANDARD STANDARD STANDARD	1
17	915 821	ETL-RING IS 2-76,25/69,65X2 SEMI-TRAPEZ RING 76,25 MM SEGMENTO SEMI-TRAPEZ 76,25 MM..... 1. SCHLIFF 1ST OVERSIZE 1A MAGGIORAZIONE	1
17	915 822	ETL-RING IS 2-76,5/69,9X2 SEMI-TRAPEZ RING 76,5 MM SEGMENTO SEMI-TRAPEZ 76,5 MM..... 2. SCHLIFF 2ND OVERSIZE 2A MAGGIORAZIONE	1
18	916 180	KOLBENBOLZEN 18X11X63,5 PISTON PIN 18X11X63,5 SPINOTTO 18X11X63,5..... BIS MOTOR-NR. 154.962 UND FUER UEBERMASSEKOLBEN 291981 / 291982 UP TO ENGINE SERIAL NO. 154.962 AND FOR OVERSIZE PISTONS 291981 / 291982 FINO A N. MOTORE 154.962 E PER PISTONI DI MAGGIORAZIONE 291981 / 291982	1
18	N 916 135	KOLBENBOLZEN 18X12X53,7 PISTON PIN 18X12X53,7 SPINOTTO 18X12X53,7..... AB MOTOR-NR. 154.963 VALID FROM ENGINE SERIAL NO. 154.963 A PARTIRE N. MOTORE 154.963	1
19	945 735	NULLHAKENRING 18 / CIRCLIP 18 SEGER SPINOTTO 18.....	2

BILD-NR. ILL. NO. FIG.	TEILE-NR. PART NO. CODICE	B E Z E I C H N U N G D E S C R I P T I O N D E S C R I Z I O N E	STUECK QTY. QTA.
20	230 552	DICHTUNG / GASKET / GUARNIZIONE.....	1
21	N 223 505	ZYLINDER MIT BUECHSE CYLINDER WITH SLEEVE CILINDRO CON CAMICIA..... STANDARD ROT 76,00 - 76,01 MM, STANDARD GRUEN 76,01 - 76,02 MM STANDARD RED 76,00 - 76,01 MM, STANDARD GREEN 76,01 - 76,02 MM STANDARD ROSSO 76,00 - 76,01 MM, STANDARD VERDE 76,01 - 76,02 MM	1
22	241 110	STIFTSCHRAUBE M8X43,5/15 STUD M8X43,5/15 / PRIGIONIERO M8X43,5/15. ANZUGSDREHMOMENT 8 NM TIGHTENING TORQUE 8 NM COPPIA DI SERRAGGIO 8 NM	4
23	230 770	VERDICHTUNGSBEILAGE COMPRESSION SHIM GUARNIZIONE COMPRESSIONE.....	N BED AS REQ A RICH
24	223 312	ZYLINDERKOPF / CYLINDER HEAD TESTA CILINDRO.....	1
25	250 311	SCHEIBE 8,4 DIN 125 / WASHER 8,4 RONDELLA 8,4.....	8
26	242 206	SK-MUTTER M8 DIN 934 / HEX. NUT M8 DADO M8..... ANZUGSDREHMOMENT 22 NM TIGHTENING TORQUE 22 NM COPPIA DI SERRAGGIO 22 NM	8
27	830 270	DICHTUNG / GASKET / GUARNIZIONE.....	1
28	945 752	FEDERRING A8 DIN 128 / LOCK WASHER A8 RONDELLA SPACCATA A8.....	2
29	240 081	ZYL.SCHRAUBE M8X25 DIN 912 ALLEN SCREW M8X25 / BRUGOLA M8X25.....	2
30	292 024	KURBELWELLENSATZ KPL. CRANKSHAFT REPAIR KIT GRUPPO BIELLA CPL.....	1
31	213 911	ZYLINDERBUECHSE / CYLINDER SLEEVE CAMICIA CILINDRO.....	1
32	297 431	LOCTITE ANTI-SEIZE 76710 LOCTITE ANTI-SEIZE 10 GR., LOCTITE ANTI-SEIZE 10 GR.,..... ZUR VERHINDERUNG VON PASSUNGSROST, 10 GR., TO PREVENT FRETTING CORROSION PER EVITARE CORROSIONE	N BED AS REQ A RICH



6-GANG GETRIEBE
6-SPEED TRANSMISSION
TRASMISSIONE 6 VELOCITA

BILD-NR. ILL. NO. FIG.	TEILE-NR. PART NO. CODICE	B E Z E I C H N U N G D E S C R I P T I O N D E S C R I Z I O N E	STUECK QTY. QTA.
1 - 24	281 031	GETRIEBESATZ 6-GANG 4,47 TRANSMISSION SET 6-SPEED 4,47 CAMBIO 6 MARCE 4,47.....	1
1	237 409	VORGELEGEWELLE 10 Z / CLUTCH SHAFT 10 T., ALBERO PRIMARIO 10 D.,.....	1
2	232 665	NADELKAEFIG K 20X24X10 NEEDLE BEARING 20X24X10 GABBIA A RULLI 20X24X10.....	1
3	235 440	LOS RAD 25 Z / FREE PINION 25 T., INGRANAGGIO 25 D.....	1
		6. GANG, VORGELEGEWELLE 6TH SPEED, CLUTCH SHAFT 6. VELOCITA, ALBERO PRIMARIO	
4	227 470	ANLAUFSSCHEIBE 24,2/27,5/1,5 THRUST WASHER 24,2/27,5/1,5 RASAMENTO 24,2/27,5/1,5.....	1
5	245 340	SPRENGRING 24 / SNAPRING 24 / SEEGER 24..	4
6	235 400	SCHALTRAD 15/18 Z / PINION GEAR 15/18 T., INGRANAGGIO 15/18 D.....	1
		3./4. GANG, VORGELEGEWELLE 3RD/4TH SPEED, CLUTCH SHAFT 3./4. VELOCITA, ALBERO PRIMARIO	
7	227 440	ANLAUFSSCHEIBE 20,2/27,5/1 THRUST WASHER 20,2/27,5/1 RASAMENTO 20,2/27,5/1.....	1
8	232 660	NADELKAEFIG K 20X24X10 F NEEDLE BEARING 20X24X10 GABBIA A RULLI 20X24X10.....	2
9	234 866	LOS RAD 21 Z / FREE PINION 21 T., INGRANAGGIO 21 D.,.....	1
		5. GANG, VORGELEGEWELLE 5TH SPEED, CLUTCH SHAFT 5. VELOCITA, ALBERO PRIMARIO	
10	235 380	FESTRAD 12 Z / GEAR, 12 T. INGRANAGGIO 12 D.....	1
		2. GANG, VORGELEGEWELLE 2ND SPEED, CLUTCH SHAFT 2. VELOCITA, ALBERO PRIMARIO	

BILD-NR. ILL. NO. FIG.	TEILE-NR. PART NO. CODICE	B E Z E I C H N U N G D E S C R I P T I O N D E S C R I Z I O N E	STUECK QTY. QTA.
11	237 890	HAUPTWELLE / MAIN SHAFT ALBERO SECONDARIO.....	1
12	232 740	NADELKAEFIG K 21X25X10 NEEDLE BEARING 21X25X10 GABBIA A RULLI 21X25X10.....	3
13	235 393	LOSRAD 32 Z / FREE PINION 32 T. INGRANAGGIO 32 D..... 2. GANG, HAUPTWELLE 2ND SPEED, MAINSHAFT 2. VELOCITA, ALBERO SECONDARIO	1
14	227 460	ANLAUFSCHIEBE 22/30/1,3 THRUST WASHER 22/30/1,8 RASAMENTO 22/30/1,8.....	2
15	234 878	SCHALTRAD 23 Z / PINION GEAR 23 T., INGRANAGGIO 23 D.,..... 5. GANG, HAUPTWELLE 5TH SPEED, MAINSHAFT 5. VELOCITA, ALBERO SECONDARIO	1
16	227 490	WINKELRING 22/30/2,8 ANGULAR RING 22/30/2,8 ANELLO ANGOLARE 22/30/2,8.....	1
17	235 423	LOSRAD 25 Z / FREE PINION 25 T. INGRANAGGIO 25 D..... 4. GANG, HAUPTWELLE 4TH SPEED, MAINSHAFT 4. VELOCITA, ALBERO SECONDARIO	1
18	235 413	LOSRAD 29 Z / FREE PINION 29 T. INGRANAGGIO 29 D..... 3. GANG, HAUPTWELLE 3RD SPEED, MAINSHAFT 3. VELOCITA, ALBERO SECONDARIO	1
19	235 433	SCHALTRAD 19 Z / PINION GEAR 19 T. INGRANAGGIO 19 D..... 6. GANG, HAUPTWELLE 6TH SPEED, MAINSHAFT 6. VELOCITA, ALBERO SECONDARIO	1
20	944 468	ANLAUFSCHIEBE 20,5/30/1 THRUST WASHER 20,5/30/1 RASAMENTO 20,5/30/1.....	1
21	234 808	LOSRAD 34 Z / FREE PINION 34 T., INGRANAGGIO 34 D.,..... 1. GANG, HAUPTWELLE 1ST SPEED, MAINSHAFT 1. VELOCITA, ALBERO SECONDARIO	1

BILD-NR. ILL. NO. FIG.	TEILE-NR. PART NO. CODICE	B E Z E I C H N U N G D E S C R I P T I O N D E S C R I Z I O N E	STUECK QTY. QTA.
22	227 430	ANLAUFSSCHEIBE 17,2/30/1 THRUST WASHER 17,2/30/1 RASAMENTO 17,2/30/1.....	1
23	245 390	SICHERUNGSBLECH NA24 / TAB WASHER NA24 RONDELLA SICUREZZA NA24.....	1
24	242 650	SK-MUTTER M20X1,5 HOEHE 12 HEX. NUT M20X1,5 / DADO M20X1,5..... ANZUGSDREHMOMENT 60 NM TIGHTENING TORQUE 60 NM COPPIA DI SERRAGGIO 60 NM	1
25	236 980	KETTENRAD 13 Z SPROCKET 13 T., 5/8X1/4X10,16 PIGNONE 13 D., 5/8X1/4X10,16..... DIESER TEIL IST SERIENMAESSIG MONTIERT THIS PART IS MOUNTED AS STANDARD QUESTO PEZZO E MONTATI STANDARD	1
25	236 979	KETTENRAD 12 Z SPROCKET 12 T., 5/8X1/4X10,16 PIGNONE 12 D., 5/8X1/4X10,16.....	1
25	236 981	KETTENRAD 14 Z SPROCKET 14 T., 5/8X1/4X10,16 PIGNONE 14 D., 5/8X1/4X10,16.....	1
25	236 982	KETTENRAD 15 Z SPROCKET 15 T., 5/8X1/4X10,16 PIGNONE 15 D., 5/8X1/4X10,16.....	1
26	258 575	SCHWENKHEBEL TRANSMISSION ACTUATING LEVER PIASTRA PORTAMOLLA CAMBIO.....	1
27	427 070	SCHEIBE 18,2/34/1 THRUST WASHER 18,2/34/1 SPESSORE 18,2/34/1.....	1
28	239 640	HAARNADELFEDER / SPRING / MOLLA.....	1
29	237 437	SCHALTWELLE / SHIFT SHAFT / ALBERO CAMBIO	1
30	945 790	SICHERUNGSSSCHEIBE 12 DIN 6799 CIRCLIP 12 / SEEGER 12.....	2
31	944 851	AUSGLEICHSCHEIBE 14,3/20/0,5 SHIM 14,3/20/0,5 / SPESSORE 14,3/20/0,5..	1
32	430 110	O-RING 10-2,7 NBR 70-80 SH O-RING 10-2,7 / ANELLO OR 10-2,7.....	2
33	258 645	SCHALTKLINKE KPL. / PAWL ASSY., ARPIONISMO CPL.,.....	1

BILD-NR. ILL. NO. FIG.	TEILE-NR. PART NO. CODICE	B E Z E I C H N U N G D E S C R I P T I O N D E S C R I Z I O N E	STUECK QTY. QTA.
34	239 650	KLINKENFEDER / PAWL SPRING / MOLLA.....	1
35	245 330	SICHERUNGSRING 10X1 DIN 471 SNAPRING 10X1 / SEEGER 10X1.....	1
36	241 805	EXZENTERSCHRAUBE M12X1 PAWL POSITIONING SCREW M12X1 VITE, REGISTRO M12X1.....	1
37	242 270	SK-MUTTER M12X1 HOEHE 4 / HEX.NUT M12X1 DADO M12X1.....	1
38	258 737	SCHALTWALZE KPL. / SHIFT DRUM ASSY., DESMODROMICO CPL.,.....	1
39	827 265	SCHEIBE 12,5/21,5/2 / WASHER 12,5/21,5/2 RONDELLA 12,5/21,5/2.....	1
40	258 695	SCHALTGABEL KPL. / SHIFT FORK ASSY., FORCHETTA CAMBIO CPL.,..... 5./6. GANG 5TH/6TH SPEED 5./6. VELOCITA	1
41	258 685	SCHALTGABEL KPL. / SHIFT FORK ASSY., FORCHETTA CAMBIO CPL.,..... 2./4. GANG 2ND/4TH SPEED 2./4. VELOCITA	1
42	258 677	SCHALTGABEL KPL. / SHIFT FORK ASSY., FORCHETTA CAMBIO CPL.,..... 1./3. GANG 1ST/3RD SPEED 1./3. VELOCITA	1
43	258 540	SCHALTSTANGE / GUIDE PIN / ASTA FORCHETTA	2
44	248 210	FUSSSCHALTHEBEL KPL. / SHIFT LEVER ASSY., LEVA CAMBIO CPL.,.....	1
45	297 431	LOCTITE ANTI-SEIZE 76710 LOCTITE ANTI-SEIZE 10 GR., LOCTITE ANTI-SEIZE 10 GR.,..... ZUR VERHINDERUNG VON PASSUNGSROST, 10 GR. TO PREVENT FRETTING CORROSION PER EVITARE CORROSIONE	N BED AS REQ A RICH
46	899 785	SCHRAUBENSICHERUNG NIEDRIGFEST LOCTITE 221 VIOLET 10 CC., LOCTITE 221 VIOLETT, 10-CC.,..... LOCTITE 221 VIOLETT, 10 CCM MEANS OF SECURING WEAK PASTA FISSAGGIO, DEBOTE	N BED AS REQ A RICH

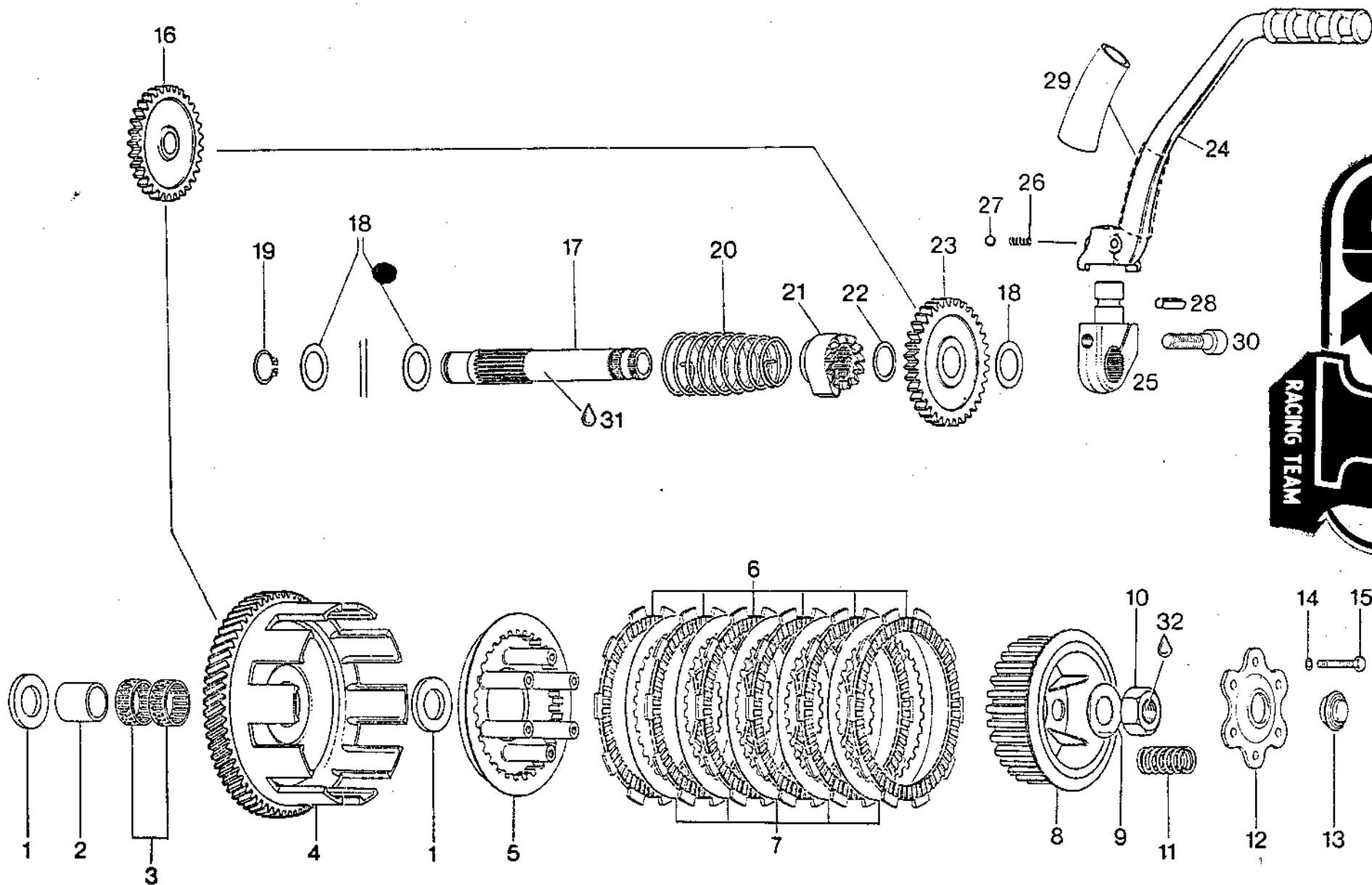


CENTRO RICAMBI^{SRL}

via CIMABUE, 24/A - 50121 FIRENZE (ITALY)

TEL. (+39) 055-66 64 23 - FAX (+39) 055-67 00 84

e-mail: cr1firenze@tiscali.it



KUPPLUNG, KICKSTARTER
CLUTCH, KICK START
FRIZIONE, MESSA IN MOTO

BILD-NR. ILL. NO. FIG.	TEILE-NR. PART NO. CODICE	B E Z E I C H N U N G D E S C R I P T I O N D E S C R I Z I O N E	STUECK QTY. QTA.
1	227 600	ANLAUFSSCHEIBE 20,2/35/3 THRUST WASHER 20,2/35/3 RASAMENTO 20,2/35/3.....	2
2	232 700	INNENRING / INNER RACE / BOCCOLA.....	1
3	232 650	NADELKAEFIG K 25X29X10 NEEDLE BEARING 25X29X10 GABBIA A RULLI 25X29X10.....	2
4	292 182	PRIMAERTRIEB KPL. / PRIMARY DRIVE ASSY., TRASMISSIONE PRIMARIO CPL.,..... NUR ANTRIEBSRAD MIT KUPPLUNGSKORB GEMEINSAM AUS- TAUSCHEN REPLACE ONLY DRIVE GEAR WITH CLUTCH DRUM ASSY. CAMBIARE SOLO L'INGRANAGGIO E LA CAMPANA FRIZIONE INSIEME	1
5	259 570	STUETZTELLER / INNER PLATE PIATTO PORTAMOLLE.....	1
6	259 055	BELAGLAMELLE 3,0 MM FRICTION PLATE 3,0 MM DISCO FRIZIONE GUARNITO 3,0 MM.....	6
7	259 557	INNENLAMELLE / CLUTCH PLATE 1 MM DISCO FRIZIONE 1 MM.....	5
8	259 060	MITNEHMER / CLUTCH HUB / MOZZO FRIZIONE..	1
9	245 320	SICHERUNGSBLECH NA20 / TAB WASHER NA20 RONDELLA SICUREZZA NA20.....	1
10	242 605	SK-MUTTER M18X1,5 / HEX. NUT M18X1,5 DADO M18X1,5..... ANZUGSDREHMOMENT 80 NM TIGHTENING TORQUE 80 NM COPPIA DI SERRAGGIO 80 NM	1
11	239 620	KUPPL.FEDER DM14,3 D2,1 L36,7 CLUTCH SPRING 36,7 MM MOLLA FRIZIONE 36,7 MM..... FEDERN NUR SATZWEISE WECHSELN CHANGE SPRINGS ONLY SETWISE CAMBIARE SOLO TUTTA LA SERIE	6
12 - 13	259 597	DRUCKPLATTE KPL. / RETAINING PLATE ASSY., PIATTO DI SPINTA CPL.,.....	1

BILD-NR. ILL. NO. FIG.	TEILE-NR. PART NO. CODICE	B E Z E I C H N U N G D E S C R I P T I O N D E S C R I Z I O N E	STUECK QTY. QTA.
12	259 594	DRUCKPLATTE / RETAINING PLATE PIATTO DI SPINTA.....	1
13	232 180	DRUCKLAGER 8X20X8,5 THRUST BEARING 8X20X8,5 CUSCINETTO REGGISPINTA 8X20X8,5.....	1
14	945 750	FEDERRING A5 DIN 128 / LOCK WASHER A5 RONDELLA SPACCATA A5.....	6
15	241 770	SK-SCHRAUBE M5X25 DIN 933 HEX. SCREW M5X25 / VITE ESAGONALE M5X25..	6
16	235 207	ZWISCHENRAD KPL. / IDLER GEAR ASSY. 31 T. INGRANAGGIO INTERMED. 31 D.....	1
17	237 428	STARTERWELLE / KICK START SHAFT ALBERG M/M.....	1
18	944 468	ANLAUFSCHIEBE 20,5/30/1 THRUST WASHER 20,5/30/1 RASAMENTO 20,5/30/1.....	3
19	945 660	SICHERUNGSRING 20X1,2 DIN 471 SNAP RING 20X1,2 / SEEGER 20X1,2.....	1
20	N 239 762	KICKSTARTERFEDER / KICK START SPRING MOLLA RITORNO M/M.....	1
21	228 185	SPERRAD / RATCHET GEAR / INNESTO M/M.....	1
22	227 480	ANLAUFSCHIEBE 20,2/25,5/1 THRUST WASHER 20,2/25,5/1 RASAMENTO 20,2/25,5/1.....	1
23	235 215	STARTERRAD KPL. STARTER GEAR ASSY. 34 T., INGRANAGGIO M/M CPL. 34 D.,..... 34 ZAEHNE	1
24 - 29	248 159	KICKSTARTERHEBEL KPL. KICK START LEVER ASSY., / LEVA M/M CPL.,..	1
24	248 148	KICKSTARTERHEBEL VERSCHLOSSEN KICK START LEVER / PARTE SUPERIORE M/M...	1
25	248 197	KICKSTARTERNABE / KICK START HUB PARTE INFERIORE M/M.....	1
26	239 537	DRUCKFEDER DM 4,1 D1,25 L 8 COMPRESSION SPRING 8 MM / MOLLA 8 MM.....	1
27	232 440	KUGEL 7/32 III DIN 5401 / BALL 7/32 SFERA 7/32.....	1

BILD-NR. ILL. NO. FIG.	TEILE-NR. PART NO. CODICE	B E Z E I C H N U N G D E S C R I P T I O N D E S C R I Z I O N E	STUECK QTY. QTA.
28	229 260	SPANNHUELSE 5X24 DIN 1481 DOWEL TUBE 5X24 / PERNO TENDITORE 5X24...	1
29	260 730	ANSCHLAGSCHLAUCH / RUBBER SLEEVE GOMMINO.....	1
30	840 991	ZYL.SCHRAUBE M8X30 DIN 912 ALLEN SCREW M8X30 / BRUGOLA M8X30.....	1
31	297 431	LOCTITE ANTI-SEIZE 76710 LOCTITE ANTI-SEIZE 10 GR., LOCTITE ANTI-SEIZE 10 GR.,..... ZUR VERHINDERUNG VON PASSUNGSROST, 10 GR., TO PREVENT FRETTING CORROSION PER EVITARE CORROSIONE	N BED AS REQ A RICH
32	899 785	SCHRAUBENSICHERUNG NIEDRIGFEST LOCTITE 221 VIOLET 10 CC., LOCTITE 221 VIOLETT, 10 CC.,..... LOCTITE 221 VIOLETT, 10 CCM MEANS OF SECURING WEAK PASTA FISSAGGIO VITI, DEBOTE	N BED AS REQ A RICH

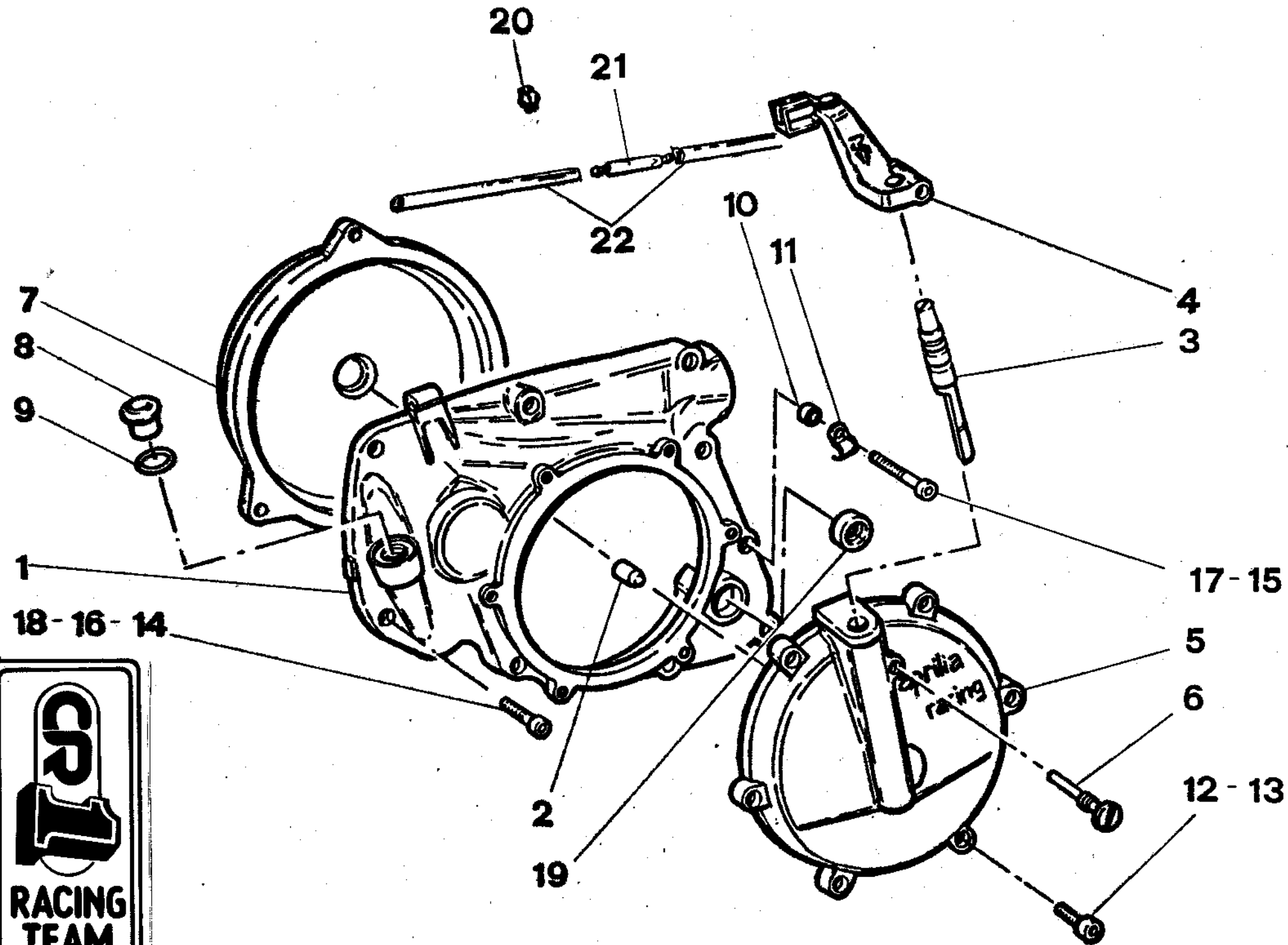


CENTRO RICAMBI^{SRL}

via CIMABUE, 24/A - 50121 FIRENZE (ITALY)

TEL. (+39) 055-66 64 23 - FAX (+39) 055-67 00 84

e-mail: cr1firenze@tiscali.it



POS.	DESCRIZIONE	CODICE
1	CARTER FRIZIONE	8106018
2	NOTTOLINO SPINGIDISCO	8106002
3	ASTA FRIZIONE	8106031
4	LEVA FRIZIONE	8106032
5	COPERCHIO FRIZIONE	8106035
6	VITE FERMO FRIZIONE	8106036
7	CARTER ACCENSIONE	8106019
8	TAPPO	241800
9	O-RING	230400
10	DISTANZIALE	247700
11	GUIDACAVO	953080
12	VITE M 5 X 20	240181
13	VITE M 5 X 25	
14	VITE M 6 X 30	840880
15	VITE M 6 X 45	241820
16	VITE M 6 X 40	241816
17	VITE M 6 X 35	241811
18	VITE M 6 X 25	840861
19	CORTECO	230355
20	FASCETTA	853840
21	VALVOLA DI RIMBALZO	256300
22	TUBO	960563



CENTRO RICAMBI ^{SRL}

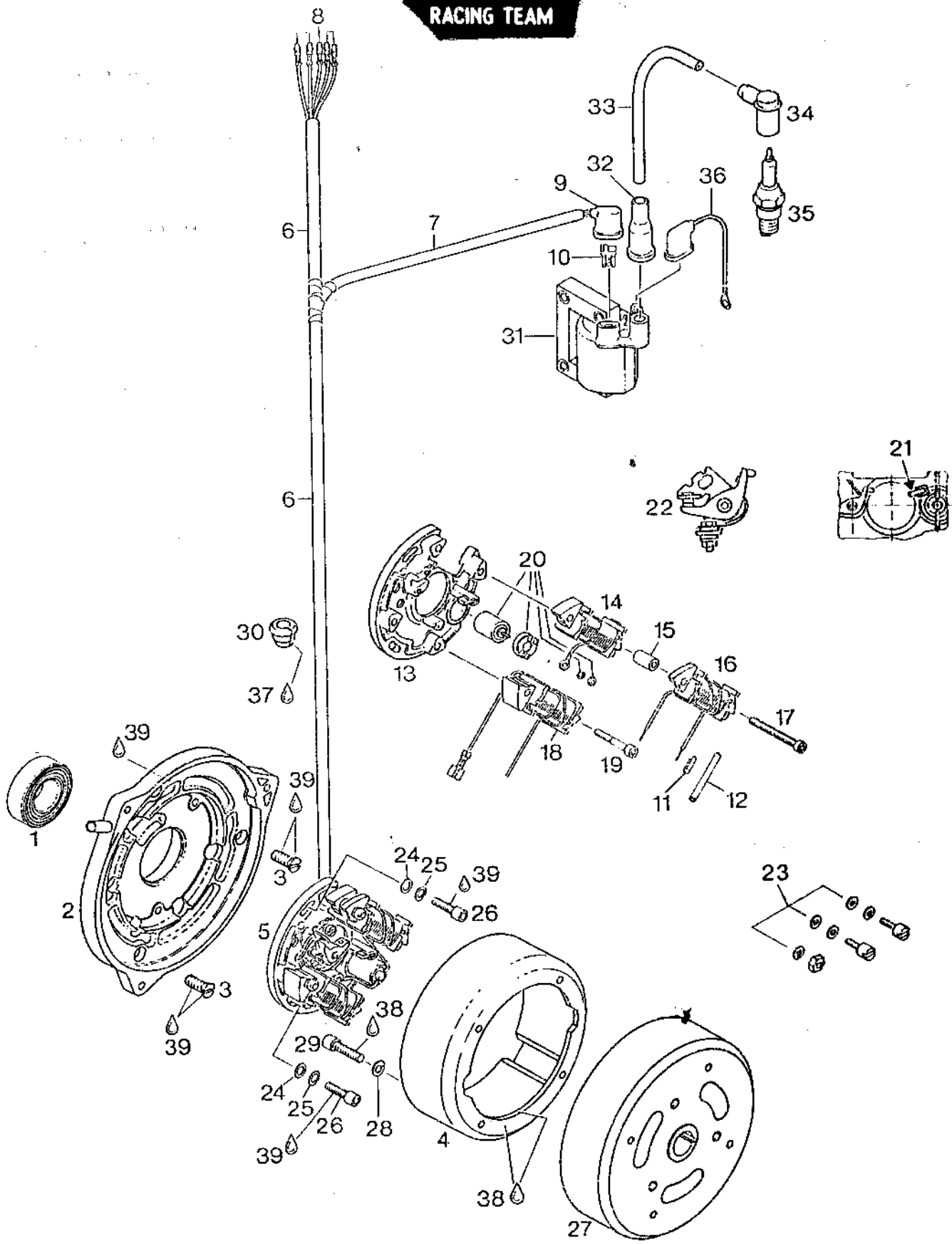
via CIMABUE, 24/A - 50121 FIRENZE (ITALY)

TEL. (+39) 055-66 64 23 - FAX (+39) 055-67 00 84

e-mail: cr1firenze@tiscali.it

CR1

RACING TEAM



MAGNETZUENDER-GENERATOR 12V 75/23W
MAGNETO GENERATOR 12V 75/23W
ACCENSIONE 12V 75/23W

BILD-NR. ILL. NO. FIG.	TEILE-NR. PART NO. CODICE	B E Z E I C H N U N G D E S C R I P T I O N D E S C R I Z I O N E	STUECK QTY. QTA.
1	932 425	RK-LAGER 6205-2RS C3 BALL BEARING 6205, 25-52-15 CUSCINETTO A SFERE, 25-52-15..... 25-52-15	1
2	212 304	ZUENDERPLATTE KPL. IGNITION PLATE ASSY., PIATTO ACCENDITORE CPL.,.....	1
3	941 831	SENKSCRAUBE M8X20 DIN 63 COUNTERSUNK SCREW M8X20 / VITE M8X20.....	3
4 - 23	992 569	MZ-GENERATOR SCP1 12V 75/23W MAGNETO GEN. ASSY. 12V 75/23W ACCENSIONE CPL. 12V 75/23W.....	1
4	983 864	MAGNETRING / MAGNETO RING PARTE ROTANTE VOLANO.....	1
5 - 23	992 589 992 589	ANKERPLATTE KPL. / STATOR PLATE ASSY., PIATTO STATORE CPL.,.....	1
6	260 435	ISOLIERSCHLAUCH 600 MM PROTECTION HOSE 600 MM / GUAINA 600 MM...	1
7	260 520	ISOLIERSCHLAUCH 230 MM PROTECTION HOSE 230 MM / GUAINA 230 MM..	1
8	964 062	STECKERSTIFT 3,96 / FASTON CONNECTOR 3,96 SPINA 3,96.....	5
9	960 590	REGENSCHUTZKAPPE / RUBBER CAP CUFFIA PROTEZIONE.....	1
10	864 261	STECKHUELSE 6,3X0,8 FASTON CONNECTOR 6,3X0,8 BUSSOLINA CONTATTO 6,3X0,8.....	1
11	264 530	LEITUNGSVERBINDER SPLICE CONNECTOR CONNETTORE CAVI.....	N BED AS REQ A RICH
12	260 412	SCHRUMPFSCHLAUCH 30 MM SHRINK TUBE 30 MM GUAINA TERMORETRAIBILE 30 MM.....	N BED AS REQ A RICH



CENTRO RICAMBI SRL
via CIMABUE, 24/A - 50121 FIRENZE (ITALY)
TEL. (+39) 055-66 64 23 - FAX (+39) 055-67 00 84
e-mail: cr1firenze@tiscali.it

BILD-NR. ILL. NO. FIG.	TEILE-NR. PART NO. CODICE	B E Z E I C H N U N G D E S C R I P T I O N D E S C R I Z I O N E	STUECK QTY. QTA.
13	865 910	ANKERPLATTE SCP1 12V 75/23W STATOR PLATE 12V 75/23W PIATTO STATORE 12V 75/23W.....	1
14	865 890	GENERATORANKER / GENERATOR COIL BOBINA ALIMENTZIONE.....	1
15	847 240	DISTANZBUECHSE 5,4/10/11 DISTANCE SLEEVE 5,4/10/11 BUSSOLA DISTANZIALE 5,4/10/11.....	2
16	865 900	BREMSLICHTANKER 23W BRAKE LIGHT COIL 23W / BOBINA LUCI 23 W..	1
17	241 415	KOMBISCHRAUBE M5X32 COMBINED SCREW M5X32 / VITE M5 X 32.....	2
18	865 026	LICHTANKER 75W / LIGHTING COIL 75 W BOBINA LUCI 75 W.....	1
19	640 095	SPERRZAHNSCHRAUBE M5X25 CYL. SCREW M5X25 / VITE M5X25.....	2
20	964 217	KONDENSATORSATZ / CONDENSER ASSY., CONDENSATORE CPL.,.....	1
21	265 815	EINSCHUBFILZ / LUBRICATING WICK FELTRO LUBRIFICANTE.....	1
22	983 343	KONTAKTSATZ / CONTACT BREAKER SET CONTATTI INTERRUATORE CPL.,.....	1
23	964 210	BEFESTIGUNGSTEILESATZ / PARTS SET SERIE PEZZI FISSAGGIO.....	1
24	927 570	SCHEIBE 5,3 DIN 125 / WASHER 5,3 RONDELLA 5,3.....	3
25	945 750	FEDERRING A5 DIN 128 / LOCK WASHER A5 RONDELLA SPACCATA A5.....	3
26	840 510	ZYL.SCHRAUBE M5X16 DIN 912 ALLEN SCREW M5X16 / BRUGOLA M5X16.....	3
27	N 264 636	SCHWUNGRAD KPL. / FLYWHEEL ASSY., MASSA ROTANTE SUPPLEMENTARIA CPL.....	1
28	945 751	FEDERRING A6 DIN 128 / LOCK WASHER A6 RONDELLA SPACCATA A6.....	4
29	841 330	ZYL.SCHRAUBE M6X12 DIN 912 ALLEN SCREW M6X12 / BRUGOLA M6X12.....	4
30	960 232	LEITUNGSTUELLE 15,5 / CABLE GROMMET 15,5 GOMMINO 15,5.....	1

BILD-NR. ILL. NO. FIG.	TEILE-NR. PART NO. CODICE	B E Z E I C H N U N G D E S C R I P T I O N D E S C R I Z I O N E	STUECK QTY. QTA.
31	984 555	ZUENDSPULE / IGNITION COIL BOBINA ACCENSIONE.....	1
32	960 550	REGENSCHUTZKAPPE / PROTECTION CAP CAPPuccio GOMMA.....	1
33	264 122	ZUENDLEITUNG 130 MM IGNITION CABLE 130 MM FILO CANDELA 130 MM.....	1
34	865 200	ZUENDLEITUNGSSTECKER SPARK PLUG CONNECTOR / CAPPuccio CANDELA.	1
35	 ZUENDKERZE SPARK PLUG CANDELA	1
36	864 271	MASSELEITUNG KPL. / MASS CABLE ASSY., CAVO DI MASSA CPL.,.....	1
37	297 336	SILASTIC 732 RTV SILASTIC 732 RTV, 100 GR., SILASTIC 732 RTV, 100 GR.,..... 100 GR.,	N BED AS REQ A RICH
38	399 738	LOCTITE 648 GRUEN LOCTITE 648 GREEN 5 GR., LOCTITE 648 .VERDE, 5 GR.,..... SCHRAUBENSICHERUNG HOCHFEST, 5 GR., MEANS OF SECURING STRONG PASTA FISSAGGIO VITI, FORTE	N BED AS REQ A RICH
39	899 735	SCHRAUBENSICHERUNG NIEDRIGFEST LOCTITE 221 VIOLET 10 CC., LOCTITE 221 VIOLETT, 10 CC.,..... MEANS OF SECURING WEAK LOCTITE 221 VIOLETT, 10 CCM PASTA FISSAGGIO VITI, DEBOTE	N BED AS REQ A RICH



CENTRO RICAMBI ^{SRL}

via CIMABUE, 24/A - 50121 FIRENZE (ITALY)
TEL. (+39) 055-66 64 23 - FAX (+39) 055-67 00 84
e-mail: cr1firenze@tiscali.it